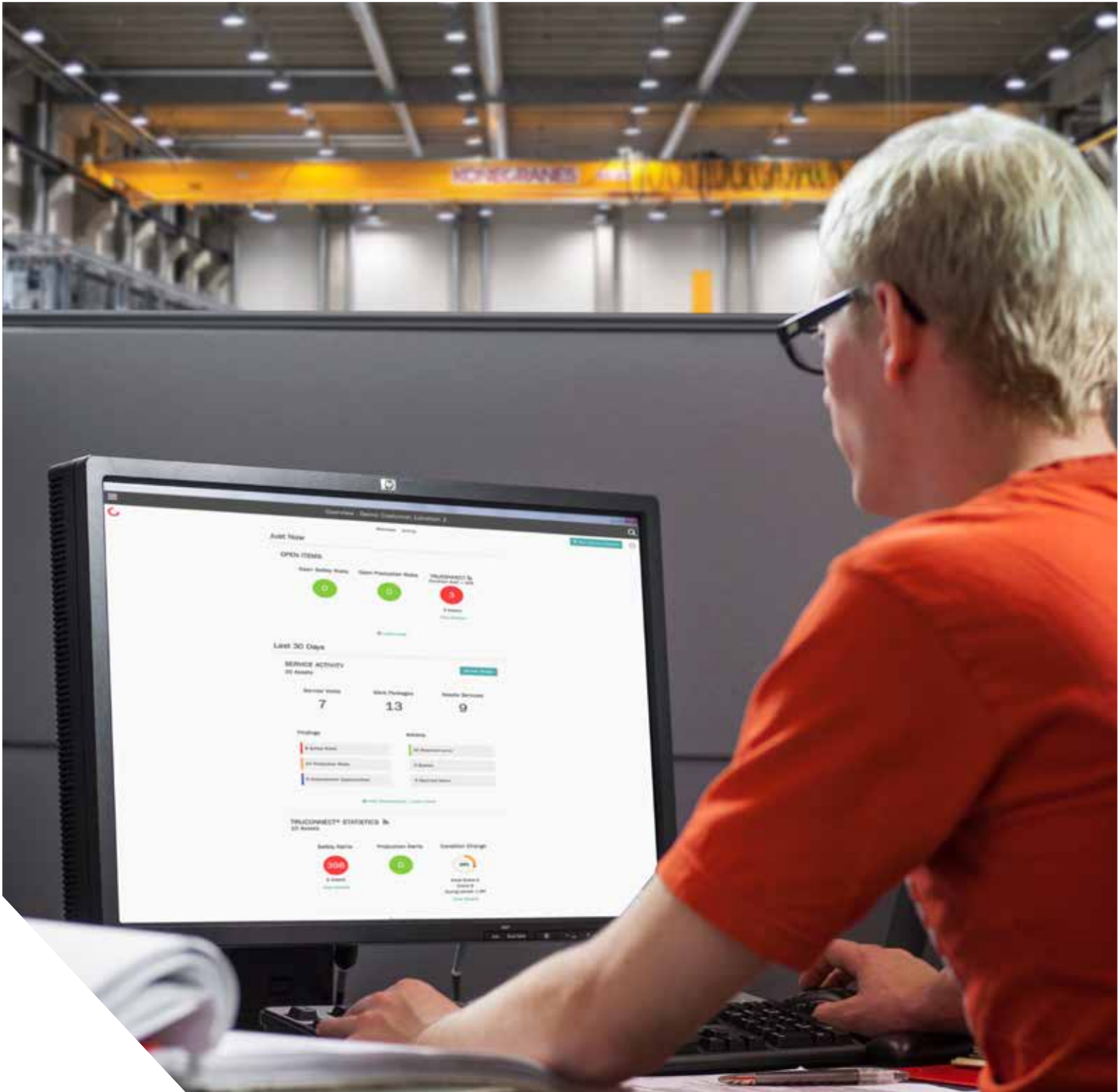


INDUSTRIAL CRANES  
NUCLEAR CRANES  
PORT CRANES  
HEAVY-DUTY LIFT TRUCKS  
**SERVICE**

**KONECRANES**<sup>®</sup>  
Lifting Businesses<sup>™</sup>

**CUSTOMER PORTAL**

**yourKONECRANES.com**



## yourKONECRANES.com

Where maintenance data and asset details can be viewed, analyzed and shared quickly, for a single asset or an entire fleet.

yourKONECRANES.com gives you quick and easy access to your crane maintenance information. Usage data from TRUCONNECT and maintenance data and asset details from MAINMAN are linked, giving you a transparent view of events and activities over any selected time interval. Aggregated data can be viewed, analyzed and shared quickly, for a single asset or an entire fleet. Insights can be drawn by observing anomalies, patterns and trends, helping you make informed, fact-based, maintenance decisions.

## VIEW, ANALYZE AND SHARE CRANE DATA

### DRAW INSIGHTS FROM YOUR DATA

**Anomalies** can show up as faults, such as overloads. These events are considered abnormal and should be addressed promptly as they occur. Knowing when an overload occurs is the first step in identifying its cause.

**Patterns** help reveal relationships between variables. For example, overload or emergency stop alerts or excessive starts may indicate the need for operator training aimed at reducing human-error downtime and the risk of safety incidents. Recurring motor overheats may indicate needed changes in equipment or process.

The study of **trends** can help prioritize corrective action and investments. Analyzing data behaviour over time supports the development of predictive maintenance.

### PRIORITIZE YOUR MAINTENANCE

The customer portal provides fault history and prioritizes assets according to chosen criteria for a quick view of your fleet's pain points. This can help you make informed maintenance decisions.



### QUICK ACCESS TO SERVICE DETAILS

On yourKONECRANES.com, you can access inspection and service reports, service schedules, maintenance histories, asset lists, service spend and agreement details. During a service visit, our mobile-enabled technicians can quickly and efficiently input information so you have quick access to your service data. You can also use yourKONECRANES to initiate service requests. The portal gives you a complete view of your assets and relationship with Konecranes on any web-enabled device.



### DATA ARCHIVING AND RETRIEVAL

You can upload legacy documents and electronic reports into yourKONECRANES, giving you digital access to all your crane records in one location.

## WHAT'S ON yourKONECRANES.com

### OVERVIEW

Get a quick view of safety alerts, risks and spend for all your assets. The **activity** tab shows all service activities in a selected timeframe; you can view all documents that are generated or uploaded in the **documents** tab; and the **new service request button** allows you to initiate a new service request with one click.

### TRUCONNECT

Remote Monitoring usage data can be viewed by fleet or a single piece of equipment. A summary view allows you to easily filter by date. Easy-to-read graphs show running hours, hoist motor starts, hoist overloads, emergency stops and over-temperatures. You can also see an estimation of remaining service life, or design working period (DWP).

### ASSET LIST

See all your assets in one place, including TRUCONNECT and service assets. From this list, you can see details on each asset such as description, location and TRUCONNECT online status.

### SERVICE CALENDAR

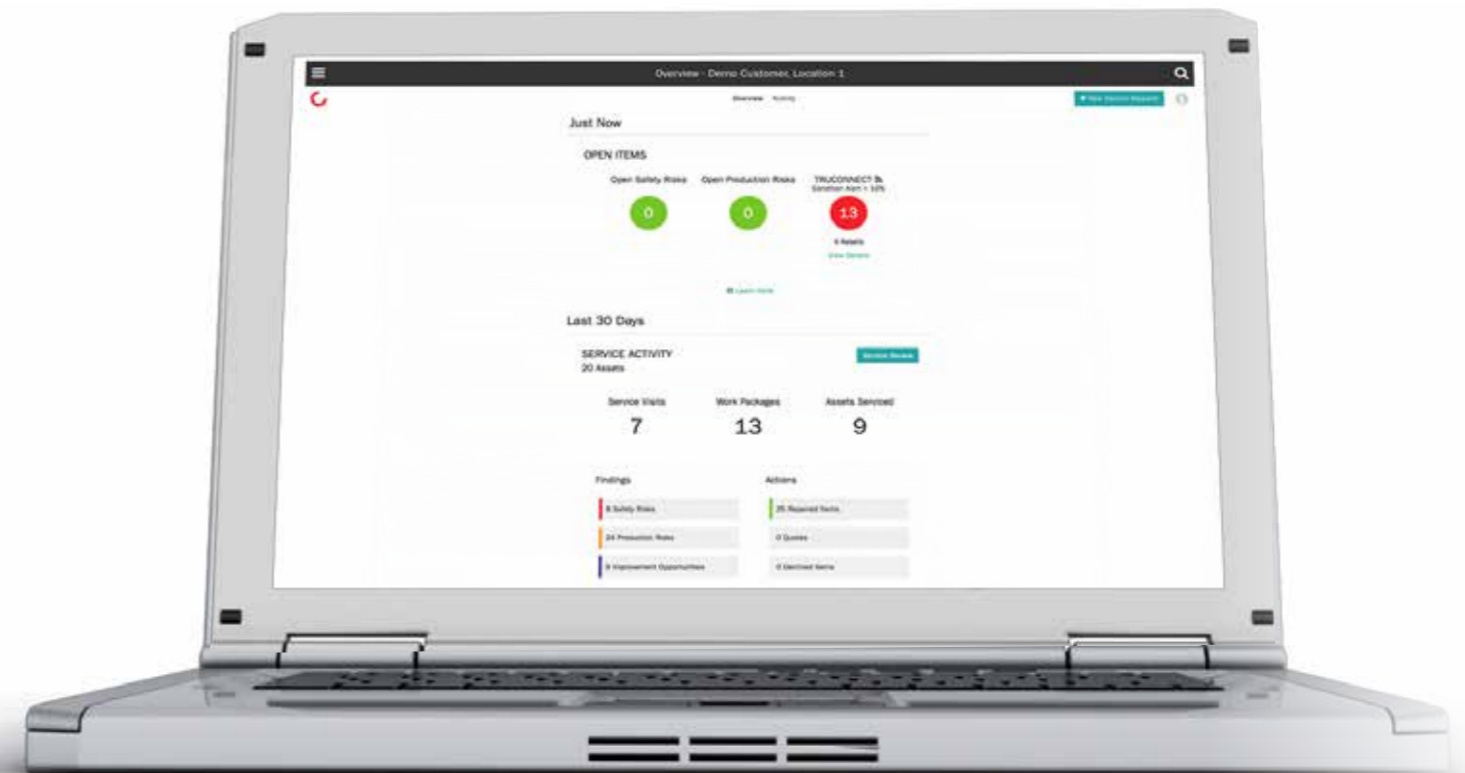
The calendar view allows you to see completed and upcoming service activity. A color-code logic shows the status of the service and filtering allows you to see activities by service product.

### SERVICE REVIEW

Information from your Service Review can be viewed at any time. On the activity tab, filtering for Completed Service Request will show you a risk summary for your recent service and details of each inspected component with recommendations and technician's comments.

### BUSINESS REVIEW

The portal contains the information presented in your Business Review and can be accessed at any time. You can view your agreement information as well as the Service products related to your agreement. The spend section shows spend figures and service KPIs. Assets can be sorted by spend and you can filter by service type or see all spending at once. Another filter allows you to view by asset criticality so you can see the trends and spend figures for your most critical assets.





INDUSTRIAL  
CRANES

NUCLEAR  
CRANES


PORT  
CRANES

HEAVY-DUTY  
LIFT TRUCKS

SERVICE



Konecranes is a world-leading group of Lifting Businesses™, serving a broad range of customers, including manufacturing and process industries, shipyards, ports and terminals. Konecranes provides productivity enhancing lifting solutions as well as services for lifting equipment of all makes. The Group has 18,000 employees at 600 locations in 50 countries. Konecranes class A shares are listed on the Nasdaq Helsinki (symbol: KCR).

© 2017 Konecranes. All rights reserved. 'Konecranes', 'Lifting Businesses' and  are either registered trademarks or trademarks of Konecranes Global Corporation.



**CONTACT US TO  
LEARN MORE ABOUT  
KONECRANES SERVICE**

[bit.ly/contact-kc](http://bit.ly/contact-kc)



[konecranes.com](http://konecranes.com)